

# **TIGRAY**

## **EMERGENCY COORDINATION CENTER**

### **OPERATIONAL UPDATE**

**2 June 2023**



Regional Emergency Coordination Center



# TIGRAY Region: ECC meeting 2 June 2023

1. Opening remarks
2. Action points from the previous meeting review
3. Key Sectoral updates
4. AoB



# Previous Action Points

| Action points for next meetings                     | Responsible body  | Date         |
|---|-------------------|--------------|
| <b>Food Security Assessment result presentation</b> | FC                | Next meeting |
| <b>Breakdown of schools (opened and not opened)</b> | Education cluster | Next meeting |
| <b>IDP data presentation</b>                        | DTM/BoSEGE        | Next meeting |
| <b>Share assessment reports</b>                     | OCHA              | Next meeting |





**OVERVIEW OF THE ACCESS AND  
HUMANITARIAN RESPONSE IN NW, CENTRAL  
AND EASTERN ZONES OF TIGRAY**

## INTER AGENCY HUMANITARIAN MISSION

Tatay Adiyabo, AdiAwuala, Sheraro  
and Rama Adi Arbaete Woredas

*24- 27 May 2023*

Response Scale-up in Gulomekeda,  
Erob and ZalaAmbesa

# Access Map (31 May 2023)



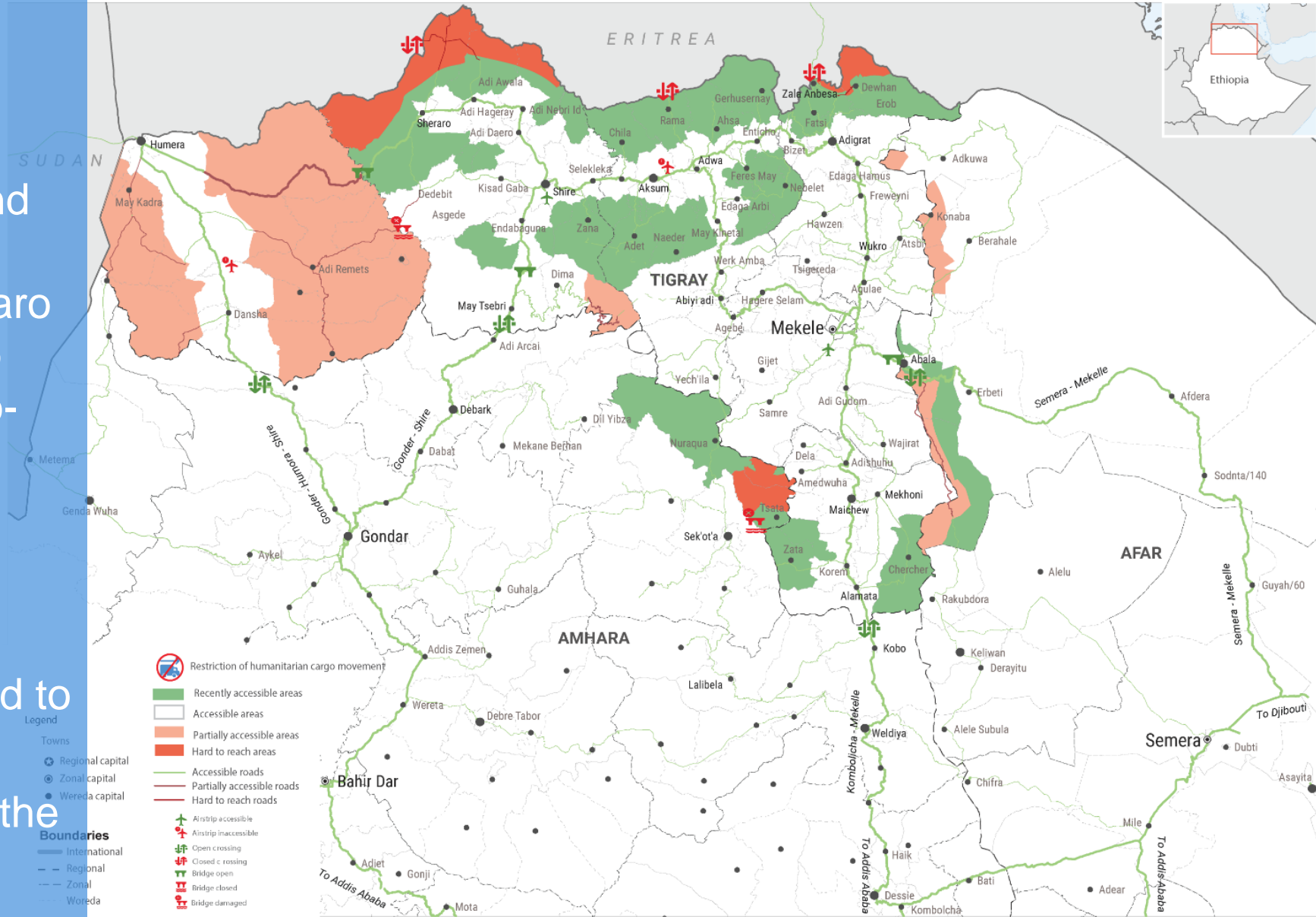
## ETHIOPIA

### Northern Ethiopia : Operational Access Map

**DRAFT**

As of 31 May, 2023

- OCHA led an inter-agency access and humanitarian mission to Northwestern and Central zones (Tahtay Adiyabo, Adi Awuala, Sheraro and Rama Adi Arabaete) to negotiate access to hard-to-reach kebeles
- Access has significantly improved.
- Gemhalo, Adi Tsetser and Badme kebeles remain hard to reach
- ENDF in Sheraro covering the Northwestern and Central Zones to ensure operation



The boundaries and names shown and the designations used on this map do not imply official endorsement or acceptance by the United Nations.

Creation date: 31 May 2023

Sources: OCHA and humanitarian partners

Feedback: [ocha-eth@un.org](mailto:ocha-eth@un.org) <http://www.humanitarianresponse.info/operations/ethiopia> [www.reliefweb.int](http://www.reliefweb.int)

# Ademeyti

- Returnees in Ademeyti and Rama Adi Arbaete haven't received any sort of assistance
- Exposed to various humanitarian crises.
- #30 HHs returned IDPs houses & the water supply system have been affected
- Families are engaging in alluvial gold mining and selling their livestock for survival as coping mechanisms, the
- Farmers unable to farm fearing of ERWs, UXO and presence of ERDF forces



## Inter-agency Humanitarian Access Mission

*Damaged health center in Ademeyti*

# Adi-Awuala

- The conflict has affected houses, shelters, health centers, water systems and schools etc
- MTI with support from WHO and UNFPA are proving support to the health center and the affected population.
- Grade 1-4 students have resumed education



Destroyed houses in Adi-Awuala

# Rama Adi Arbaete

- Birshiwa primary hospital in Rama is currently providing 24/7 service for emergency services
- WHO, ICRC, MFM, and FHI are supporting the hospital.
- The health center in Muhukan Kebele is currently occupied by the ENDF
- Rama town currently hosts 2900 IDPs mostly from the Western zone living in host communities





# Mission Team visited Birshiwa Hospital in Rama

During Inter Agency Mission



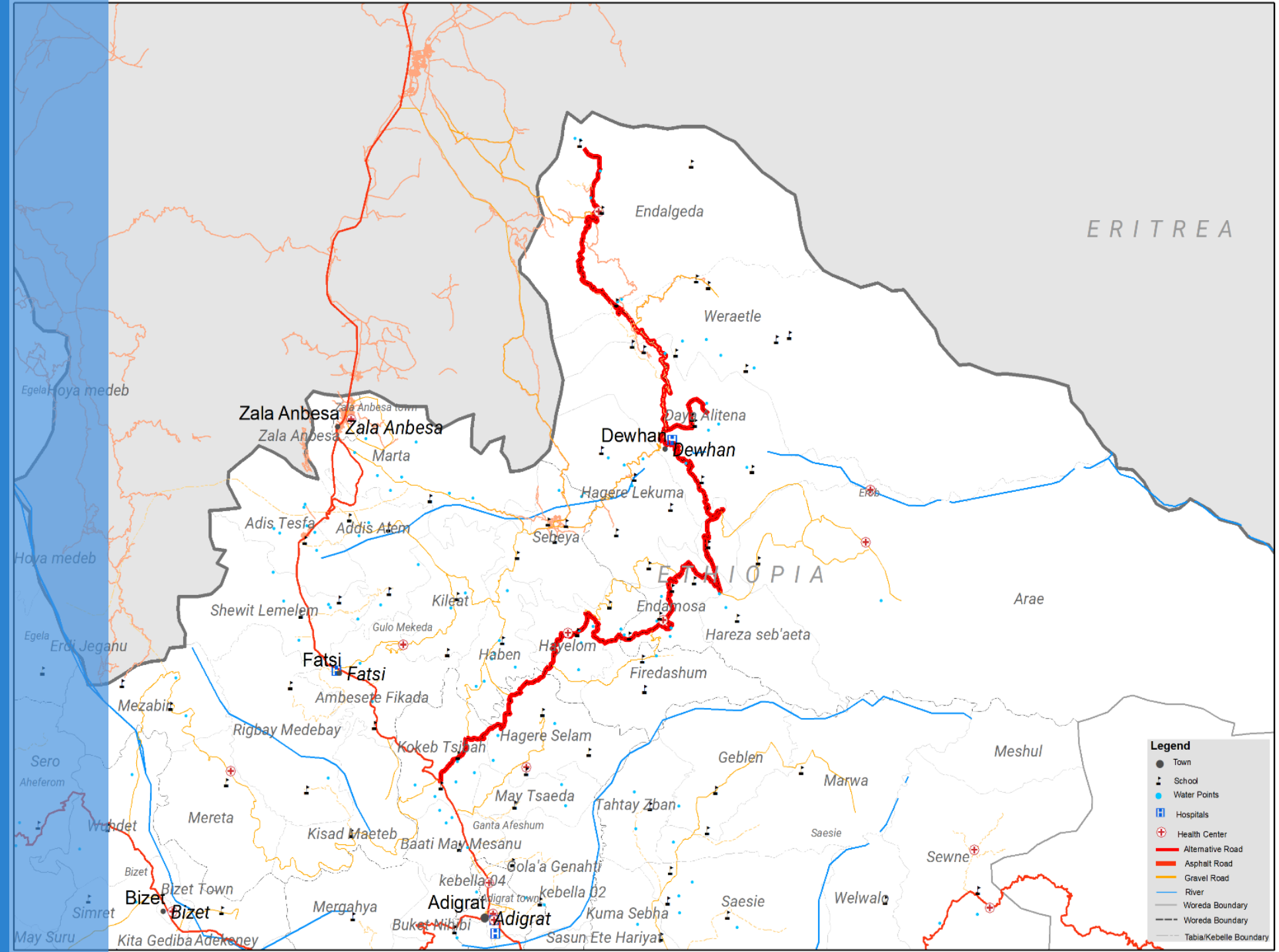
OCHA

United Nations  
Office for the  
Coordination of  
Humanitarian  
Affairs



# Mission in Eastern Zone

- OCHA-led Interagency assessment conducted on 9 to 15 2023, Erob, Gulomekda, and Zalambesa,
- ADCS distributed NFI repair kits for 349 HH in Gulomekda and Erob. Ethiopia is also planning to distribute water treatment chemicals for 7000 HH in Erob Gulomekda, and Ganta Afeshum.





## Response Scale up

- **Health partners** delivered medicine to Zalambesa, Dowhan, and Alitena health centers i.e. enough 5000 populations.
- **ICRC** continued the provision of health services in Zalambesa town, while Care Ethiopia is also planning to resume mobile Health service
- **ADCS** maintained 2 shallow borehole water points in Erob Woreda.
- **Plan international** working out on CMAM management in Zalambesa and Erob
- **ZOA** distributed farm tools (watering can, digging hoe, Shovel, Rake, and Spade) in Erob and Gulomekda for 1,110 HH

# Spontaneous Returnee

- IOM DTM (unendorsed), Currently around 884 HH IDPs returned to Erob
  - Zalambesa – Currently more than 6000 individuals living in town.
  - Farmers started preparation of their land





# Land Preparation for 2023 Harvest

Farmers raised the lack of Agriculture input including Fertilizer and Seed



**THANK YOU!**

# Food Cluster Update



Regional Emergency Coordination Center





## Food Cluster Key Updates as of 01 June, 2023

- ❖ Due to selling of food assistance in some areas and inclusion and exclusion error in targeting, both JEOP and WFP temporary paused delivering of food assistance for the neediest and war affected people in Tigray only.
  - This decision is unexpected and the Tigray DRMC, interim GOV'T and the needy people especially the IDPs and Returnees are highly shocked!
  - We couldn't deny the problems (selling of aids and targeting problems), as a government and people have no tolerance for such kind of problems, there is a commitment for investigation but it should be done side by side, unless the vulnerable group of people are going to be die b/c of lack of food.

## Food Cluster situational update as of 01 June, 2023

- ❖ **It has been more than one month since the main food partners temporarily paused food assistance activities in Tigray on 21 April until further notice** following reports of significant sale and misuse of humanitarian food commodities destined for Tigray and other regions in local markets in Mekelle and some zones.
- ❖ Prior to restarting food dispatch and distribution, to ensure that assistance will reach the intended vulnerable people **with improved oversight measures in place, the partners have been carrying out investigations and working with the authorities, communities and donors to roll out systematic targeting exercise, improve beneficiary data verification and management, strengthen commodity tracking and distribution procedures, and enhance monitoring as well as community feedback mechanisms.**
- ❖ Based on joint food distribution point mapping and analysis, **partners are working to set up more food distribution points**, particularly in rural areas, so that families can receive their food rations closer to home without having to travel long distance with increased transport costs/protection risks.
- ❖ **During the first official visit of six directors from EDRMC since CoHA this week**, they met with regional officials and food partners, and formal communication between Tigray RDRMC and EDRMC has started.

## Food Cluster Key Updates as of 01 June, 2023

- ❖ **As the peak hunger season (from June to November) is approaching**, without timely food assistance provision targeted at the most vulnerable people, there is great concerns that the food and nutrition security situation in the region may further deteriorate.
- ❖ **During the month of May 2023, unprecedentedly, zero people in the region received food assistance from the main food partners due to the pause in food distribution starting in mid-April.**
- ❖ **During the past two years (May 2021 - May 2023), six rounds of food distribution took place in Tigray (excluding the most recent round which is on hold), out of which, one stretched for more than ten months; three rounds stretched for five months respectively; and two rounds stretched for around three months each.**
- ❖ It is critical to ensure that **IDPs and returnees are issued with legal identity documents** as soon as possible to facilitate their access to services/assistance, mitigating the risk of further displacement.
- ❖ **Joint verification by Health/Food/Nutrition partners** of unconfirmed death reports is needed to support evidence-based advocacy.

# Logistics Cluster Update



# Weekly Operational Updates

- Since 15 November, **47 partners** requested support letter for the movement of **6300 trucks**. **All** trucks that obtained EDRMC support letter arrived.
- After 28 April, In Total **6330 trucks** with **249,541 MT** of humanitarian supplies and **1,719,592** litres of fuel have confirmed arrival via the three corridors
- Between 19 May and 01 June, the arrival of **10 trucks** carrying **225 MT** of humanitarian supplies via the Corridors was reported

| Organization       | Cargo Category | No.Trucks | Amount in MT |
|--------------------|----------------|-----------|--------------|
| CAI                | Education      | 3         | 50           |
| FAO                | Agriculture    | 1         | 40           |
| MSF-Holland        | Health         | 3         | 15           |
| UNICEF             | Mixed Cargo    | 1         | 40           |
| WVE                | ES/NFI         | 1         | 40           |
|                    | Food Security  | 1         | 40           |
| <b>Grand Total</b> |                | <b>10</b> | <b>225</b>   |

- The Logistics Cluster Conducted a capacity strengthening training on **Warehouse and Inventory Management Training** in which **33 participants** from **16 Organizations** participated between 30 May and 1 June.



# Accomplishments this week

| Activity description                   | Accomplishment   |
|--|--|
| 1. Transport for partners upon request | <ol style="list-style-type: none"><li data-bbox="728 339 2448 482">1. <b>2.4 MT</b> of Health, WASH, Shelter and General program items belonging to WHO, IOM, IMC and SCI were <b>dispatched</b> from Shire and Mekelle Logistics Cluster Warehouse to WHO Office and Shire IDP sites between 20 May and 26 May.</li><li data-bbox="728 539 2448 632">2. The Logistics Cluster in Mekelle <b>received 24 MT of Health, WASH, Shelter and General Operation items</b> belonging to UNFPA and SCI between 19 May and 31 May.</li></ol> |
| 2. Storage for partners upon request   | <ol style="list-style-type: none"><li data-bbox="728 796 2448 939">1. In Mekelle the Logistics Cluster is storing approximately <b>88 MT</b> of WASH, Shelter, Health, Education, Protection, General Operation and NFI on behalf of four partners (<b>WHO, UNFPA, SCI and FH</b>)</li><li data-bbox="728 946 2448 1039">2. In Shire, the Logistics Cluster is storing approximately <b>91 MT</b> of Health, Shelter, Education, Early Recovery and WASH on behalf of three partners (<b>WHO, NRC and SCI</b>).</li></ol>            |



- The government announced the lifting of the requirement of support letters for humanitarian cargo moving to Tigray, as of April 28, 2023.
- Health items and IT equipment are still required to secure MoH and INSA support letters.
  - Official communication shared by EDRMC is disseminated by mailing list
  - As per EDRMC and RC, the Logistics Cluster is requested to keep tracking the cargo arriving into Tigray.

- **Gondar Corridor**

- According to reports, the Gondar corridor is currently inaccessible due to security concerns.
- May Tsebri area is reachable from Gondar and Shire however it is not possible to pass through May Tsebri.

- **Kombolcha corridor**

- Kombolcha corridor also reportedly inaccessible due to security concerns
- Security challenges reported in Kobo and Woldia area along the Kombolcha corridor. It is not recommended to use this corridor for partners.

- **Semera corridor**

- Security concerns along the Adama-Semera corridor
- Regional authorities have announced removal of all checkpoints in the corridors except those located at the borders with other regions (Tigray, Oromia, Somali)



# Plan for next week

| No. | Activity Description                                | Operational location (woreda)                        | Plan (qty)  | Available resources   | Remark (any preconditions, support needs, etc)         |
|-----|---|--|---|---|--|
| 1   | Facilitate Transport Services                       | Semera - Mekele<br>Gondar-Shire<br>Kombolcha-Mekelle | Consolidating Weekly Report on Arrival of cargo into Tigray |   |  |
| 2   | Facilitate Warehouse Service                        | Mekelle and Shire                                    | Upon request  | Mekelle ( <b>3500 m2</b> ), Shire ( <b>730 m2</b> )                             | Subject to partner request and operational constraints |
| 3   | Facilitate airlift services                         | Addis Ababa-Mekele<br><br>Addis Ababa- Shire         | On stand by for request from partners                       | Boeing 737<br>13MT per trip (subject to volume of cargo)                        | Subject to partners securing required clearances       |
| 4   | Sharing Information Management Products to Partners | Online   | Weekly, monthly   | <a href="https://logcluster.org/ops/eth20">https://logcluster.org/ops/eth20</a> |  |



# Challenges

- Partners not reporting on the arrival of their trucks timely.
- Note: the weekly dashboards and reporting on item categories arrived in Tigray is based on:
  - *Item category description provided by the partners*
  - *The weight (MT) reported in the dashboards reflects the total capacity of the truck which is submitted to EDRMC Support Letter requests*
  - *For more details and granular information on items received by each cluster, stakeholders are invited to approach the Clusters*
  - *Access Constraint: Not all Corridors are accessible*



# Education Cluster Update



Regional Emergency Coordination Center



# Needs and Gaps:

- **1,377 schools resumed schooling** in 74 woredas (includes both primary and high school) as of May 31, 2023
- Out of 1,377 schools that opened, **80-85% teachers reported.**
- **20,300 children in Shire and 6,155 children in Sheraro** are prevented from accessing schools where there are IDPs
- **Low enrollment reported** (especially for high school students)
- **Mine clearance assessment carried out in over 1,700 schools** – validation & certification pending.
- **Over 3,000 desks, chairs and large number of textbooks donated** from Oromia & other private donors (being assembled by the REB)
- **Financial Need:** 90 million USD and gap is 79%

## Reasons cited for schools not opening include the following:

- a. **552 schools** are in woredas occupied by armed groups from outside the region
- b. **110 schools** are being used by IDPs
- c. **Security concerns** (along border areas)
- d. **Damage to infrastructure** and unsuitable learning environment
- e. **Lack of teaching and learning materials** (chalk , blackboard, student materials)



**Children in Sheraro attending classes in unfinished buildings**



# Response: (Update since last ECC – consolidated weekly)

| No. | Activity description   | Plan (needs or target) | Achievement | % accomplishment (show the gaps) | Remark (explanation for over/under achievements)                                       |
|-----|--|------------------------|-------------|----------------------------------|--|
| 1   | Distribution of learning materials to students (South East, Eastern, Southern, North West and Central Zones) – <b>Read II, SCI and PIE</b> | 65,000                 | 48,388      | 75%                              | Final report pending from few partners (WVE, IRC and others)                           |
| 2   | 2 <sup>nd</sup> phase contextualization of MHPSS in education materials and piloting with 35 teachers                                      | 35                     | 35          | 100%                             |  |
| 3   | Children reached with emergency non-formal learning (AEP) – <b>Imagine 1 Day I</b> (Southern Zone)   | 10,000                 | 4,447       | 45%                              | Over 10,000 graduated and enrolled in public school                                    |
| 4   | Classrooms Rehabilitated/TLS provided ( <b>SCI</b> )   | 20                     | 11          | 55%                              | 10 in process from UNICEF for Sheraro  |
| 5   | Clearance of landmines in all accessible schools (over 1,700 schools)  | 2,000                  | 1,550       | 77%                              |  |
| 7   | <b>Donor Missions/Advocacy:</b> ECHO & USAID   | 2                      | 2           | 100%                             |  |
| 8   | School Feeding   | 20,000                 | 4,447       | 22%                              | WFP ready to a launch SF in Central Zone (Naeder, Keyih Tekli, Tanqua Milash and Adet) |



# Cumulative plan Vs Accomplishments

| Cluster Indicators/targetsTra                   | Cumulative plan (target) | Cumulative Reach (response) | Remark  |
|---|--------------------------|-----------------------------|---|
| Distribution of Learning Materials              | 964,000                  | 213,933                     | 22%   |
| School Feeding                                  | 174,000                  | 11,053                      | 6%  |
| Back to school campaign/mobilization            | 550,000                  | 65,000                      | 11%   |
| Rehabilitation/establishment of TLS             | 250                      | 49                          | 20%   |
| Girls reached with MHM/sanitary supplies        | 30,000                   | 514                         | 0.1%  |
| People reached with life-saving messages        | 250,000                  | 90,000                      | 36%   |
| AEP for crisis affected IDPs and host community | 70,000                   | 108,365                     | Large portion now integrated in formal school |
| Training on MHPSS                               | 11,000                   | 1,287                       | 12%   |



# Plan for next week (Major response plans, note more than two slides)

| No. | Activity description  | Operational location (woreda)       | Plan (qty) | Available resources | Remark (any preconditions, support needs, etc.) |
|-----|---|-------------------------------------|------------|---------------------|---|
| 1   | Distribution of Learning Materials  | Shire, Adwa, Axum, Mekelle, Sheraro | 40,000     | Supplies dispatched | SCI, WVE and IHS                                |
| 2   | 2 <sup>nd</sup> phase contextualization of MHPSS in education materials and piloting with 35 teachers | Adigrat (with TDP)                  | 35         | SCI & UNICEF        | With the TDP and Abi Adi/Adwa TTC's             |
| 3   | Distribution of combined desks/blackboards  | Mekelle, Axum, Adwa                 | 300        | Desks dispatched    | SCI, WVE  |
| 4   | Transportation of REB Supplies (UNICEF)   | TBC by REB                          | 1          | Transport secured   | UNICEF & the REB - Locations & items TBC        |
| 5   | Launch of Go Fund me/1 family to 1 child by TDA   | All                                 | 1          |                     | TDA   |
| 6   | Donor missions:1 missions planned   | Mekelle, SE Zone and Eastern Zone   | 2          | N/A                 |   |



# **Agriculture Cluster Update**





# Contextual update

- Agriculture sector is the main source of livelihoods for 85% of Tigray region's population and key for rebuilding lives and livelihoods of conflict affected people.
- The main meher season is just few days to start however; the land preparation status is reported at 30% of the planned.
- The weather forecast indicates normal to above normal rainfall with timely onset and likely early secession especially in eastern escapement.
- Agro-inputs (fertilizer and crop seeds) distribution is on going however still very little compared with the needs.
- To address limited land opening, BoA will deploy some tractors to speed up land opening however these tractors don't have adequate operational cost.
- BoA controlled the outbreak of tree locusts and army worms, but the risk of re-infestation is very high.
- 198 persons (DA and other experts) were trained in different agronomic activities, DRM and EW





# Needs and Gaps

- Major crop
  - Seeds 36,900MT, Fertilizers >80,000MT, agro-chemicals >228,750 Liters and 12,200kg
  - Agricultural machineries, institutional capacity (extension system)
- Livestock support (health)
  - Drugs 18m, Vaccine >16m and Equipment and maintenance for 198 health institutions (clinics & health posts)
  - Livestock feed, restocking of core breeding asset
- Support on Natural Resource development and management
  - Hand tools
  - Forest seeds





# Response for the 2 weeks

| No. | Activity description        | Plan (needs or target) | Achievement | % accomplishment (show the gaps)   | Remark (explanation for over/under achievements) |
|-----|-----------------------------|------------------------|-------------|------------------------------------|--|
| 1   | Dispatch of fertilizer(Qt)  | 150,000                | 85,202      | 56.68 covers<br>(170,400 Hectares) | To be completed June 8                           |
| 2   | Dispatched of Seeds(Qt)     | 43,846                 | 22,011      | 50.2                               | On transportation process                        |
| 3   | Deployment of tractors (No) | 69                     | 43          | 62.31                              | On progress                                      |
| 4   | Seeds (vegetables)(Qt)      | 280                    | 112         | 40                                 | On progress                                      |
| 5   | Viral Vaccine(vials)        | 520,000                | 304,879     | 58.6                               | On going   |
| 6   | Bacterial vaccine(vials)    | 500,000                | 378,814     | 75.7                               | On going   |
| 7   | Total treatment(doses)      | N/A                    | 3,024,513   |                                    | On going   |



# Cumulative plan Vs Accomplishments

| Cluster Indicators/targets                | Cumulative plan (target) | Cumulative Reach (response) | Remark                                   |
|---|--------------------------|-----------------------------|--|
| Fertilizer distribution(qt)<br>irrigation | 83,333                   | 71560                       | Some woredas didn't receive their shares |
| Fertilizer distribution(qt)<br>Meher      | 150,000                  | 85,202                      | To be finalized June 8/2023              |
| Forest Seedlings preparation              | 1,359,000                | 1,000,000                   | To be planted in this season             |





# Plan for next week/ Season

| No. | Activity description    | Operational location (woreda) | Plan (qty) | Available resources | Remark (any preconditions, support needs, etc.)                              |
|-----|-------------------------|-------------------------------|------------|---------------------|--|
| 1   | Delivery of fertilizers | 51 woredas                    | 64,798     | On transportation   |  |
| 2   | Seed                    | Selected                      | >25000     | On pipeline         |  |
| 3   | Vaccines                | All woredas                   | 336,307    | On pipe line        | Distributed to woredas   |
| 4   | Vaccine                 |                               | 12,000,000 | Not transported     |  |
| 5   | Deploying tractors      | 3 centers in 3 zones          | 43         |                     | Lack of operational costs and cash support to vulnerable people for renting. |
| 6   | Fruit seedlings         | Selected woredas              | 2,000,000  |                     | Preparation ongoing  |





# Key Challenges

- Agricultural cluster is quite below the planned target for distribution of inputs(fertilizers-18%, Seeds- 12%)
- Only 30% of the planned for preparation achieved so far (lost of draught animal power, tractors, farm tools)
- The tractors need operational costs, thus needs cooperation from every cluster. Clusters may support vulnerable groups based on their area of interventions
- The livestock disease including zoonotic are still at peak
- Infestation of pests, worms and plant diseases may be challenge as there is no adequate preventing materials and inputs



# Reminder

- “Supporting the sector means supporting all clusters” Khatab
- The bureau's plan is to produce at least 17m quintals of grain in this season.
- All partners in the cluster are doing to their bests but it is beyond their capacity
- Thus, all clusters should support to their focus groups in the their areas of intervention



# Thank You!



Regional Emergency Coordination Center





# Nutrition Cluster Update



Regional Emergency Coordination Center



- **Week 19 & 20 - 2023:-**
- **In the last two weeks**
- Children under 5 Screened: 127,922 (57,186 girls and 52,467boys)
- Of the children screened 21.8% were wasted.
- PLW screened: 22,533 and 71 % of these women were acutely malnourished.
- A total of 3,625 SAM children were admitted for treatment (3,347 children were admitted to Outpatient care and 278 were admitted to Inpatient care. )
- Some 92 Health workers were trained on Integrated management of acute malnutrition
- Nutrition cluster in 2023 has been able to respond in 66 accessible woredas in Jan – May 2023. There are gaps in funding for several nutrition partners affecting mainly local partners.
- The limited funding from April going forward has led to the nutrition response covering only 44 woredas
- Coverage of health facilities is also low and there is still need for scale-up.



# Supplies Update

| Supplies received Nov-May 2023 |         |             |          | Stock balance |
|--------------------------------|---------|-------------|----------|---------------|
| Commodity                      | Unit    | Distributed | Pipeline |               |
| <b>SAM supply</b>              |         |             |          |               |
| RUTF                           | Carton  | 68,352      | 8,518    | 29,587        |
| F-75                           | Carton  | 477         | 210      | 229           |
| F-100                          | Carton  | 200         | 401      |               |
| Vitamin A                      | Tin-100 | 13,657      | 3,200    |               |
| Amoxicillin                    | Bottle  | 0           | 43,718   |               |
| IFA                            | Tin-100 | 0           | 47,948   |               |
| SQLNS                          | Carton  | 5,913       |          |               |
| <b>MAM Supply</b>              |         |             |          |               |
| RUSF                           | MT      |             | 304.8    |               |
| CSB++                          | MT      |             | 1,229    |               |

- Adequate supplies of RUTF, F100 and F75 are available in Tigray.
- In total, 17,888 cartons of RUTF which had been distributed is still unused and most of it is stationed in the woredas and health facilities and some in partners' warehouses.
- Redistribution is being done from woredas where there are excess supplies to woredas where there are limited supplies.
- At present, in WFP Mekelle Warehouse, there is 1533.800 MT of stock to cover 265,466 Beneficiaries.



# Challenges and Plans

---

## Challenges:

- **Suspension of food distribution** - this has directly affected the nutrition response.
- **Lack of funding for the nutrition activities:** Forcing some partners to scale down field presence
- **Coverage of nutrition program not optimal** as some Health operational following extensive damage.

## Plans for next 2 weeks:

- Plans are in place to conduct a **nutrition survey in Tigray** to assess the extent of nutrition Situation.
- SMART + training taking place from 7-12 in Addis, 8 participants from the region attending (TRHB, THRI, MU, UNICEF, WFP)
- Conduct Joint Support Supervision in Central Zone and undertake the review meeting in the Zone.
- Finalize two partnerships with Local NGO for the next six months.
- Resume the distribution of MAM supplies



# Health Cluster Update

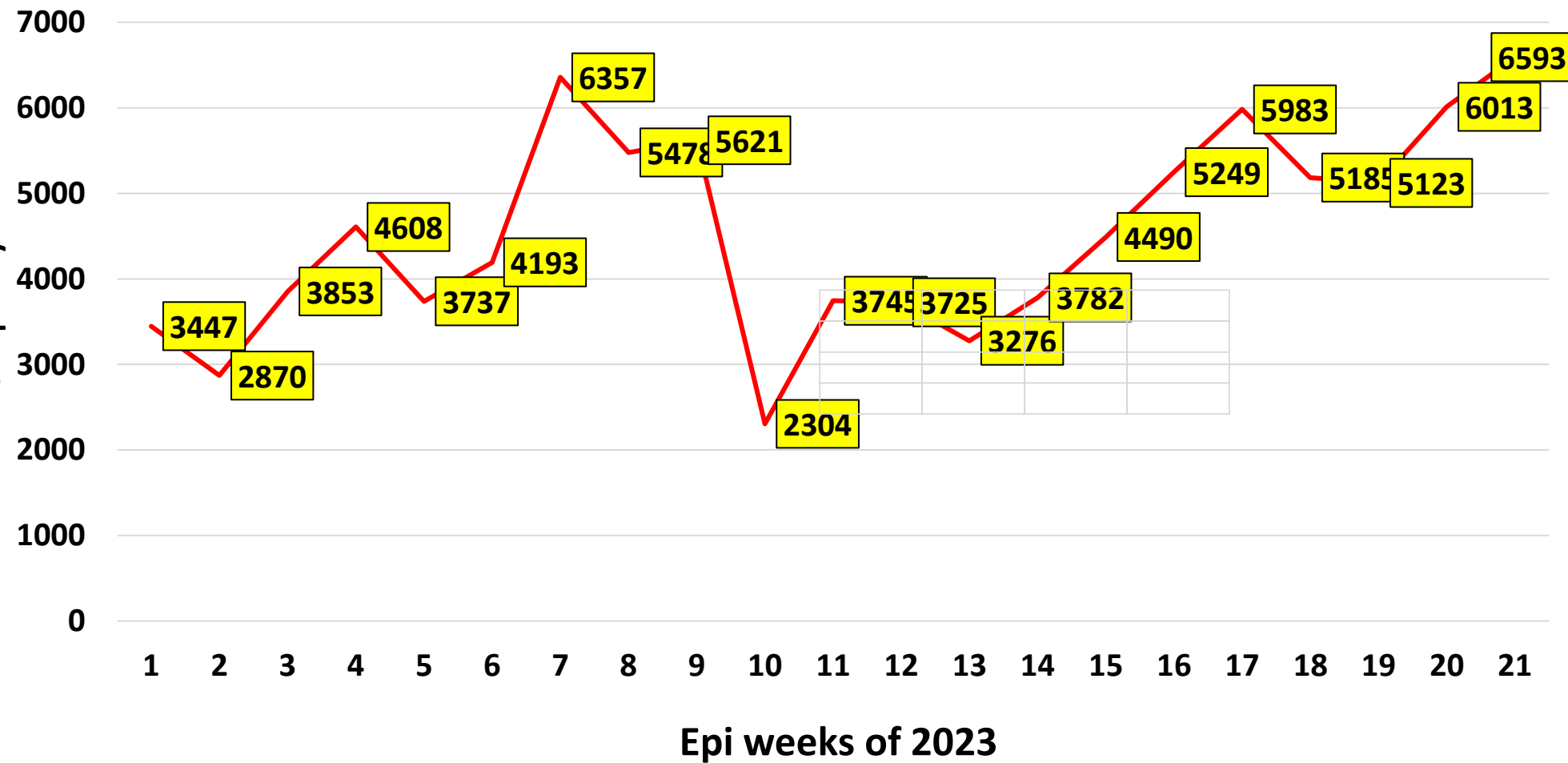


Regional Emergency Coordination Center



# Situation update of malaria

Trend of Malaria cases EPI week 1-21, 2023.



- Despite the increment of Malaria in an alarming rate, the available LLINS could reach to beneficiaries due to shortage of budget for distribution.

# Situation update of malaria

# Situation update of the Zoonotic diseases

- MOH- E had sent 1.4 million nets for 33 malaria hot spot weredas.

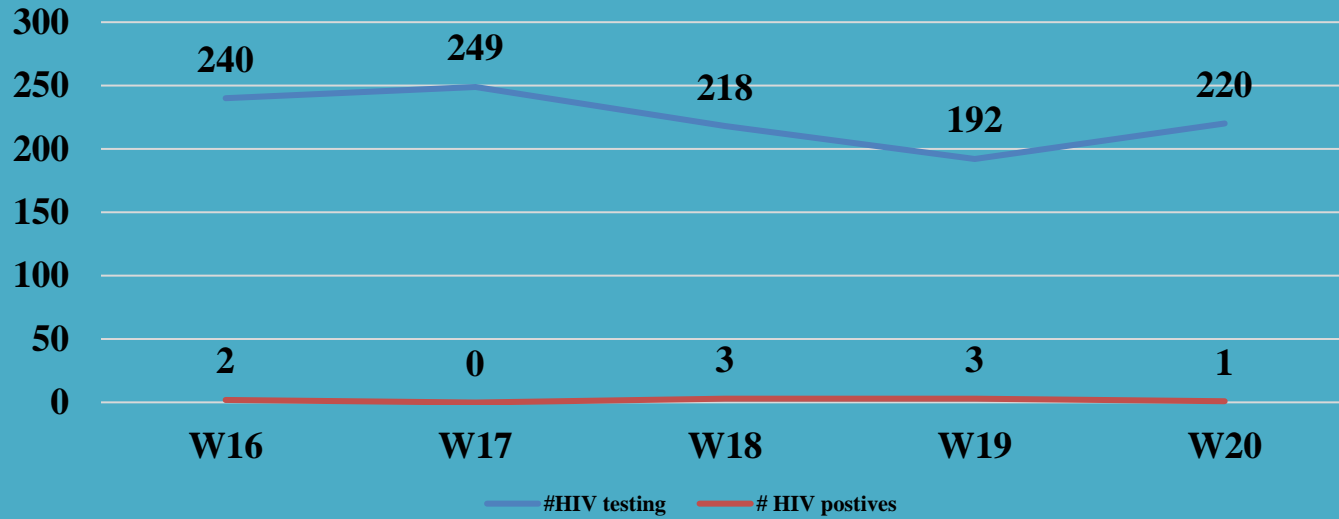
- 46 dog bite exposure and 1 death from Rabies.

| # of malaria hotspot weredas delivered LLINS. | Get green light by partners | Gap | List of the wereda not getting                                    |
|---|-----------------------------|-----|---|
| 33  | 27                          | 6   | Naider, Endbatsahma, MAaknetal and Embasneit, Asgede and T/Adibao |

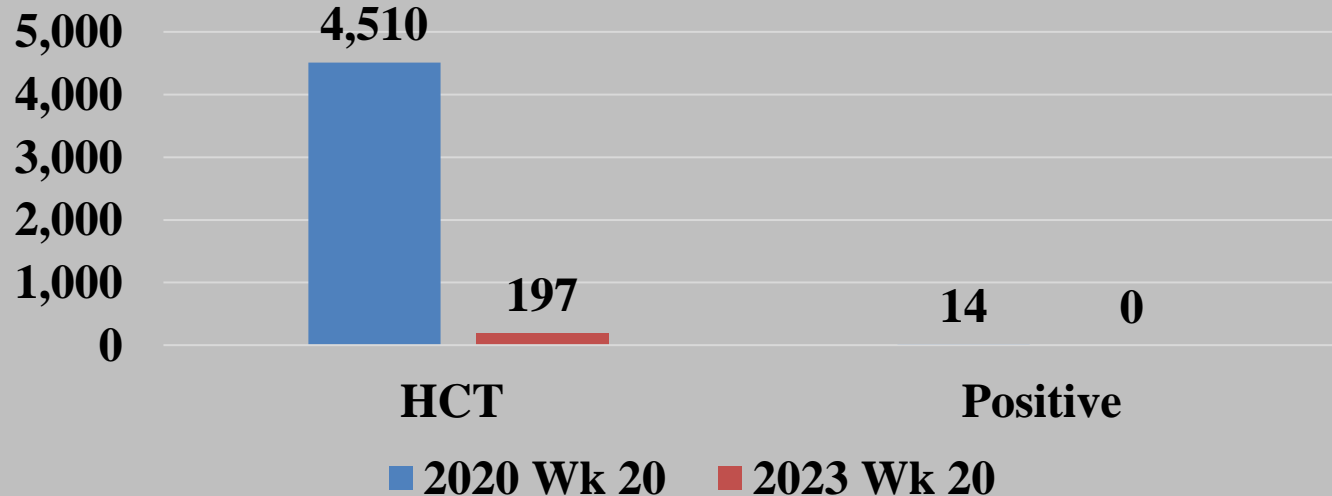
- 91 suspected Anthrax cases reported in the last two weeks.
- zoonotic disease are becoming the major cause of morbidity and mortality
- **Vaccinating Animalas for( Antharx and dogs)is highly demanding.**

# Essential Health service update

### HCT and Positivity Rate (HF+MHNT)



### HIV Testing



- HTC service is almost neglected and needs an advocacy.
- Resuming HCT in all HIV testing and counseling in all entry point





# Comprehensive Health Facility Assessment Progress

- HeRAMS TOT Workshop: May 12 - 14
- Key-Informants/Data Providers Workshops:
  - 4 Workshops successfully completed and health facilities data entered on an online dedicated portal for the Mekelle, South-east, Eastern, North-west Zones and Central (*partly*) Zones of Tigray.
  - 5<sup>th</sup> and final workshop ongoing – To be completed on 03<sup>rd</sup> June with data entry for the Southern and remaining health facilities of Central Zones.
- On-site verification of the 10% random (stratified) sample of health facilities scheduled for: June 05 – 15.
- **Report Writing**: Ongoing – To be finalized for sharing with the Tigray RHB and FMOH on June 30.

# Pharmaceuticals

- Despite of the improvement in the arrival of medicines, there are more medicines and medical supplies are needed in health facilities.
- RHB and health partners are moving supplies to the last-mile health facilities.
  - ❖ Guaze ( For covering trauma and Wounds)
  - ❖ Iv fluids (RL, DW, DNS etc)
  - ❖ IV antibiotics ( Metronidazole IV)
  - ❖ NCD drugs

# Challenges

- Budget for distribution of bed to household level and medicine to HFs highly demanded
- The HIS severely disrupted and we getting health service delivery report from only report 110(43%).
- More IV fluids needed for life saving for patients with bleeding and sepsis
- Laboratory reagents needed for prompt diagnosis of diseases
- Disruption of the referral and counter-referral system due to shortage of ambulances
- Post-Exposure Prophylaxis for rabies needed
- Anthrax vaccination campaign for Animals not yet conducted
- Inaccessibility of health facilities around of the border areas of Tigray.

# WASH Cluster Update



Regional Emergency Coordination Center



## Key priority:

WASH service provision at the community level (Rural and urban)

- Rehabilitation and maintenance of water supply schemes
- Capacity strengthening of WASH Governance (at Regional, Zonal, Woreda, Tabia and WASH Co).
- Water quality surveillance
- Sanitation service improvement in areas of return and host communities

WASH response to IDPs (in 103 IDP sites and in host communities)- as per full WASH package guidelines

- Water provision through durable options and water trucking, Water quality monitoring, sanitation service provision, appropriate liquid / solid waste management and Hygiene promotions – provision of WASH NFIs.

Institutional WASH (Schools and Health Facilities)

- Approximately 110 schools used as IDP sites and at least 40% would need site clean-up & decommissioning to reopen schools.
- 63% of schools have no WASH services
- 76% of Health facilities need WASH service provision.



## WASH Cluster response ( May 2023)

- WASH cluster coordination supported 26 active & reporting WASH partners and were able to reach 173595 people through WASH service provision. This includes 26,554 people through water trucking, and 157,534 people through durable water supply schemes.
- WASH cluster prioritizes the repairs and maintenance of water points in the region.
- WASH cluster supported partners through the coordination hub and

## Key challenges and asks:

- **Funding** for the WASH response scale up.
  - Currently the funding is not sufficient to meet the scale up needs.
- **Supplies:** current supplies are approximately 10% of the initial scale up requirements.
- **Scale of response needs** is significantly high. Over 70% of water points non-functional
  - Significant needs at health facilities and schools
  - Sanitation and WASH NFI provisions in IDP sites
- **Staffing / HR** capacity is very limited among WASH partners – Number of staff and technical capacity.
- **Capacity building** of NGO, and Water Bureau staff at Zonal and Kabelle level to ensure sustainability and exit from humanitarian response.



## TIGRAY: WASH Cluster biweekly Response

| WASH-Indicators  | Target/HRP | Bi-Weekly Plan | Bi-Weekly Achi. | Bi-Weekly Ach. % | Remark |
|--|------------|----------------|-----------------|------------------|--------|
| # People get access to Sanitation facilities               | 1,561,255  | 27,645         | 19,063          | 69               |        |
| # People get access to water through durable solution      | 2,185,996  | 29,081         | 21,973          | 76               |        |
| # People get access to water through water trucking        | 668,231    | 56,823         | 38,219          | 67               |        |
| # People provided with lifesaving WASH NFI                 | 832,456    | 72,301         | 51,823          | 72               |        |
| # People provided essential sanitation and hygiene message | 3,376,378  | 47,201         | 34,810          | 74               |        |



Regional Emergency Coordination Center



# TIGRAY: WASH Cluster biweekly Response - 2023

| WASH-Indicators  | Target/HRP | Cumulative reach | Remark |
|--|------------|------------------|--------|
| # People get access to Sanitation facilities               | 1,561,255  | 141,960          |        |
| # People get access to water through durable solution      | 2,185,996  | 354,905          |        |
| # People get access to water through water trucking        | 668,231    | 145,458          |        |
| # People provided with lifesaving WASH NFI                 | 832,456    | 260,339          |        |
| # People provided essential sanitation and hygiene message | 3,376,378  | 302,740          |        |



Regional Emergency Coordination Center





## Next Bi-Weekly Plan

| WASH Indicator   | Plan   | Remark |
|--|--------|--------|
| # People get access to Sanitation facilities               | 25,178 |        |
| # People get access to water through durable solution      | 33,241 |        |
| # People get access to water through water trucking        | 56,823 |        |
| # People provided with lifesaving WASH NFI                 | 72,301 |        |
| # People provided essential sanitation and hygiene message | 47,201 |        |



# Emergency Shelter & NFI Cluster Update



Regional Emergency Coordination Center



# CCCCM Cluster Update



Regional Emergency Coordination Center



# Tigray Contextual Update

- Food remains the #1 need followed by NFIs.
- Most IDPs are not keen to relocate citing food, NFIs, social support structure, and school enrolment as of the reasons stopping them from Relocating to built up IDP sites.
- The government has identified the following sites as relocations sites Mai Dimu in Shire, Sabacare 4 and Elshadai in Mekelle. Commission and Ex UNMEE sites in Adigrat however the supporting letters for Adigrat are yet to be finalized.
- IDPs are still being accommodated in 70 schools. However, the accommodation space has been reduced leading to overcrowding in the few spaces that are available.
- Due to the overcrowding in the school sites, IDPs are now susceptible to contagious diseases as well as GBV and conflict of resources. In some schools that were used as IDP sites children are exacerbating skin rashes and other illness that are consistent with overcrowding and lack of hygiene.



# Response

- Despite lack of adequate resources partners are preparing contingency plans for the rainy season. This includes clearing of drainages, identifying of shelters that require maintenance. Leveling up of all areas where stagnant water has been seen to settle in the past.
- Cluster partners have been facilitating other cluster partners to carry out their activities in IDP sites – this include cleaning campaigns, screening of critical IDPs that need food and other supplies.
- Cluster partners have been holding scheduled site level meetings and IDP leader's meetings.
- Area Based Approach has been inaugurated in the Central zone. The cluster supported IOM to roll out the ABA.



# Challenges, Gaps and Needs

- With the return of learners to school, there is need to carry out decommissioning activities. From CCCM perspective most schools are in sorry state and there is need to try and reinstate them to their original or better state. This extraction of the solid waste residue, treatment of the liquid waste associated with latrines and showerer. Painting and fixing of doors and windows.
- Most partners resources are not adequate to cover for activities associated with all the CCCM pillars.
- Due to the lack of food, some partners are challenge to operate in certain sites with cases of two partners reportedly asked to leave the site by IDPs alleging that they are not doing enough to advocate for food.
- The lack of an active CWG in Shire frustrates efforts towards seeking cash as an alternative solutions to address shelter and food needs.



# Next weeks plans

- Consolidate the relocation plans and firm up on them.
- Where possible carry out relocations of IDPs from school sites to built up sites.
- Complete security enhancement plans for IDP sites especially SB4.
- Review expansion and absorption capacities of EX UNMEE and Commission site in Adigrat - Eastern Zone.
- Review the service availability tool with a view to make it all inclusive and responsive to our audiences.



# Protection Cluster Update



- In Maichew, EECMY in partnership with UNHCR has provided an awareness creation workshop on safety and access to justice to Government officials and IDPs for 143 (76F, 67M).
- UNHCR GBV partner DICAC has distributed 300 dignity kits for IDPs at Sebacare 4. They provided a total of 30,000 Birr for 10 GBV survivors for Medication purposes.
- In Maichew and Mekoni protection staff have been solely engaging in IDP returnee counseling/registration and a total of 1,177 HHs were reached so far.
- UNHCR -EECMY conducted an assessment on justice institutional capacity and IDPs' specific legal aid needs.



- Conducted family verification and reunified 79 UASC in various locations of Tigray.
- CP awareness raising has been given in all intervention areas 3864 (2075 Girls and women).
- 1722 schools were cleared by the military of UXOs and over 8000 UXOs found, collected, and destroyed and this enabled over 1377 schools to open for children's education.
- GBV response service is being provided at WGFS, One-Stop Centers, Safe Houses, and CMR facilities.
- Conducted community mobilization activities at different entry points to prevent GBV.



- The food aid pause made in Tigray is complicating the socioeconomic and health-related problems of IDPs. This is however more evident for people with specific needs, particularly people with chronic illness and persons with disability.
- There is no CP and GBV partner presence in Kola Temben and Keyih Tekli Woreda to provide CP and GBV service so as a result there is a lack of referral points. MSF mobile clinic reported a high number of fistula cases identified due to early pregnancy, early/child marriage, and other protection risks.
- HLP cases are not yet entertained because of the nonresumption of courts. Efforts to push the designated institutions to resume services and advocacy are needed.
- CP Service coverage is still low at 15% (35 Woredas out of 89 Woredas), with the central zone reflecting a bigger coverage and the southern zone with low coverage.
- Limited opportunities for livelihood interventions in the region.
- Health facilities face shortages of equipment and medical supplies especially Sexual and Reproductive Health Kits.



## *TIGRAY: Protection Cluster Challenges encountered*

- IDPs displaced from other regions and the eastern zone of Tigray haven't yet restored their identity card. It is suggested to bring the attention of immediate response from the government.
- Some woredas, especially in the southern and Eastern zone close to Eritrea's border, remain inaccessible.
- Some children among the IDP population have not enjoyed their right to rejoin schools due to uncertainty around their accommodation.
- Funding for CP partners especially national NGOs remains limited and insufficient to support a strong CP response. This leaves 50% of the woredas in Tigray not served by any CP for mapping, marking, and clearance of explosive ordnance (EO).
- 28 new victims of UAXOs were reported during the month of May 2023. These include 23 injured & 5 deaths.
- 552 schools occupied by foreign forces and suspected to be contaminated.
- Due to scarcity of food, negative coping mechanisms have emerged exposing people to survival sex, unintended pregnancies, and STI/HIV among others.

